



RECP #: 752656

RECORDED 5/8/2019 AT 1:11 PM BK# 2620 PG# 1698
Debra K. Lee, CLERK OF LARAMIE COUNTY, WY PAGE 1 OF 1

STATE OF WYOMING CORNER RECORD

(In compliance with the CORNER PERPETUATION AND FILING ACT, Wyoming Statutes, 1997 Section 33-29-140, et. seq., and the Rules and Regulations of the Board of Registrations for Professional Engineers and Professional Land Surveyors)

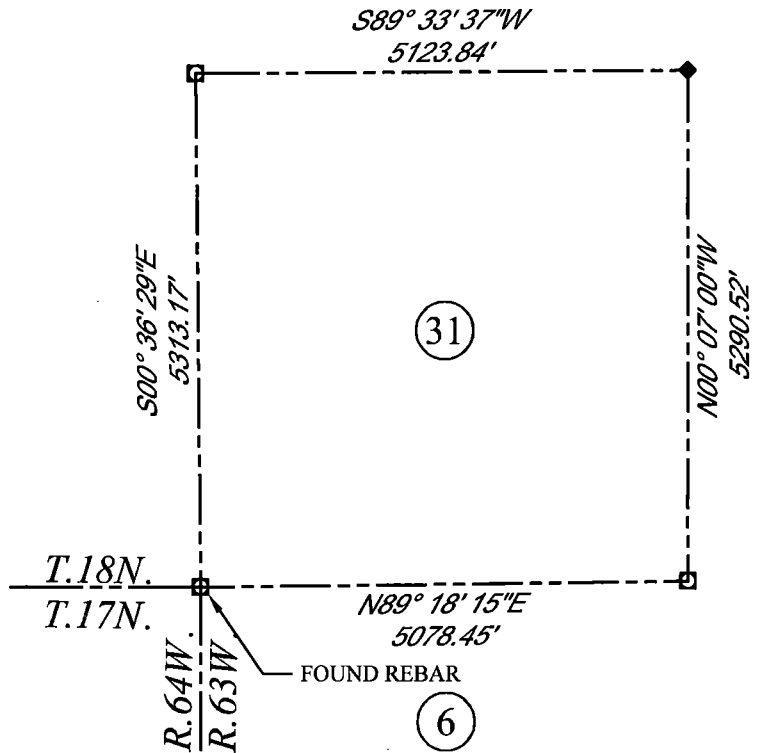
NORTHWEST CORNER SECTION 6, T. 17 N., R. 63 W., 6TH P.M., LARAMIE COUNTY, WYOMING

GLO: SET A SANDSTONE 22X12X8, 16 IN. DEEP, WITH SIX MARKS ON EACH OF ITS FOUR FACES AND SET TO THE CARDINAL POINTS, AND RAISED A MOUND OF STONES AROUND IT FOR CORNER TO TPS. 17 AND 18 NORTH, RANGE 63 AND 64 WEST, OF THE 6TH P.M.

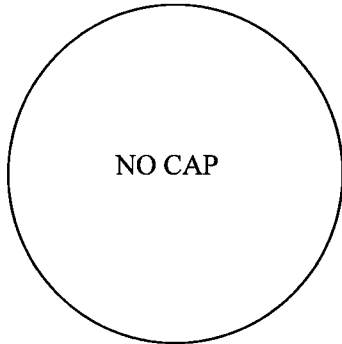
FOUND: REBAR, NO CAP, SET AT SURFACE WITH A MOUND OF STONES SET ON THE EAST SIDE.



SCALE: NONE
NORTH DETERMINED BY
G.P.S OBSERVATIONS



FOUND: REBAR, NO CAP



DATE OF FIELD WORK: 8/22/2018 OFFICE REFERENCE: MERIDEN

LEGEND:

- FOUND BLM CAP
- FOUND USFS CAP
- FOUND STONE
- ◆ FOUND PRIVATE MONUMENT
- ◇ CALCULATED POSITION
- ▲ SET MONUMENT (LS10245)
- SECTION LINE

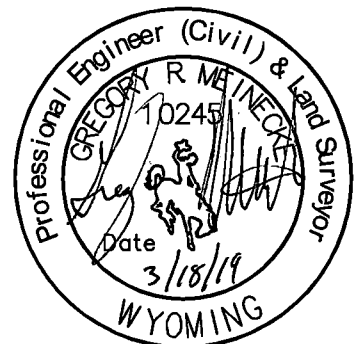
CROSS INDEX DIAGRAM

A	2	3	4	5	6	7	8	9	10	11	12	13	14	15	16	17	18	19	20	21	22	23	24	25	A
B																									B
C	6																								C
D																									D
E																									E
F																									F
G	7																								G
H																									H
J																									J
K																									K
L	18																								L
M																									M
N																									N
O																									O
P	19																								P
Q																									Q
R																									R
S																									S
T	30																								T
U																									U
V																									V
W																									W
X	31																								X
Y																									Y
Z																									Z
	1	2	3	4	5	6	7	8	9	10	11	12	13	14	15	16	17	18	19	20	21	22	23	24	25

WOOD
2615 AVIATION DRIVE
SHERIDAN, WY 82801
PH: 307-675-6400



THIS CORNER RECORD WAS
PREPARED BY ME OR UNDER
MY DIRECTION AND
SUPERVISION,
SEAL AND SIGNATURE



CORNER NAME: NORTHWEST SECTION: 6 T. 17 N., R. 63 W. ; 6TH P.M. CROSS-INDEX # A-1
SBRPELS/PLSW: MARCH 1994; PLSW JANUARY 1998